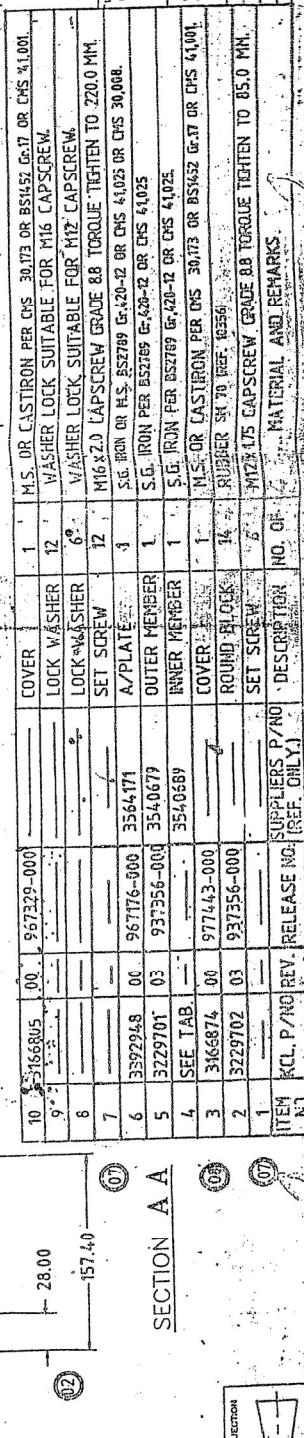


DO NOT SCALE THIS DRAWING
This document (and the information shown thereon) is **CONFIDENTIAL AND PROPRIETARY** and shall not be disclosed to others in hard copy or electronic form, reproduced by any means, or used for any purpose without written consent of Cummins India Limited, licensee of Cummins Engine Company, Inc.

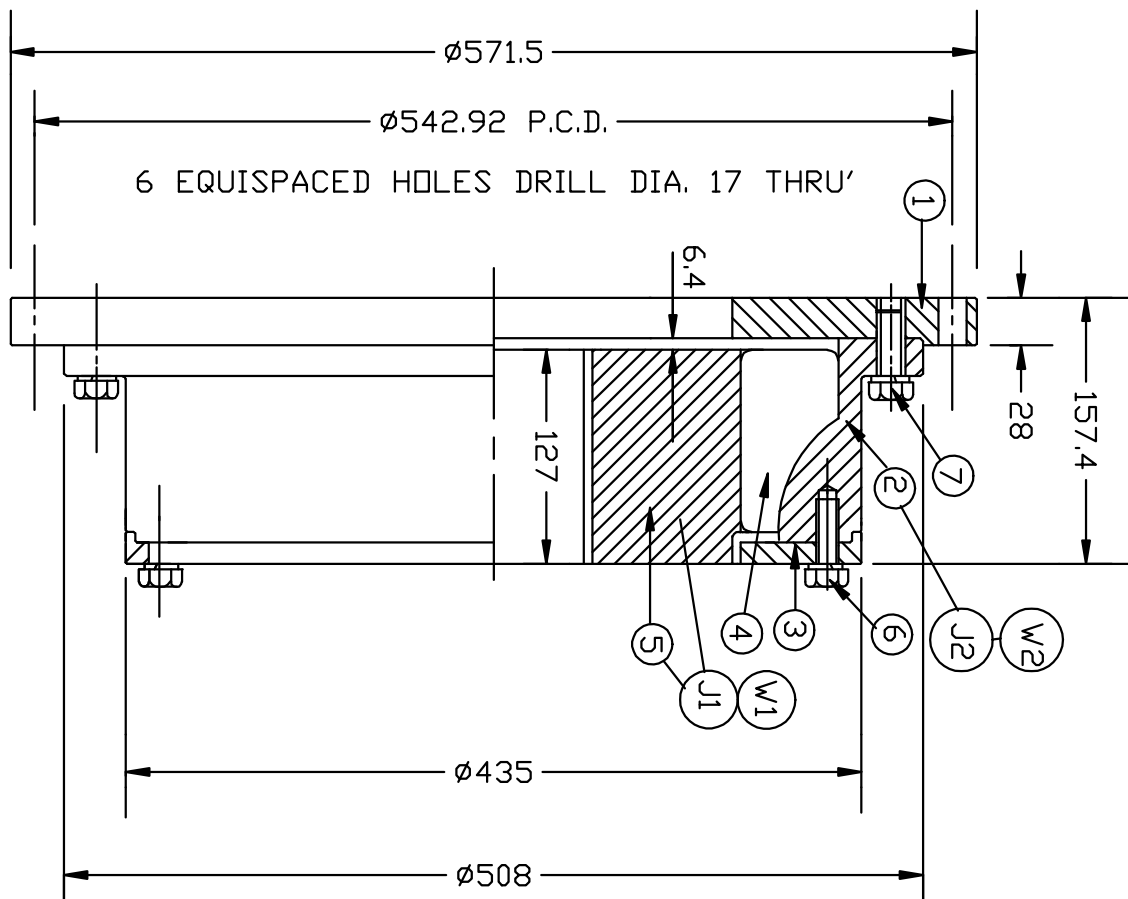
DO NOT SCALE THIS DRAWING

This document (and the information shown thereon) is **CONFIDENTIAL AND PROPRIETARY** and shall not be disclosed to others in hard copy or electronic form, reproduced by any means, or used for any purpose without the written consent of Cummins India Limited, licensee of Cummins Engine Company, Inc.

Technical drawing of a mechanical assembly, likely a pump or motor component, showing a cross-section with various parts labeled with letters and numbers.



1203778/2022/HEP-TAM21302



NO.	DESCRIPTION	QTY.	MAT./REMARKS
1	ADAPTOR PLATE	1	STEEL / S.G. IRON
2	OUTER MEMBER	1	C.I.
3	COVER	1	C.I. / SINGLE PIECE
4	ROUND BLOCK	14	RUBBER SM 70
5	INNER MEMBER	1	S.G. IRON
6	SET SCREW	7	M12 X 35L Tightening Torque = 85 Nm
7	SET SCREW	12	M16 X 50L Tightening Torque = 220 Nm

REV. NO.		DATE	DETAILS

TECHNICAL DETAILS

$$\overline{T_{kn}} = 9159 \text{ Nm.}$$

$$\overline{M_{\max}} = 27400 \text{ Nm.}$$

MOMENT OF INERTIA J1 & J2 IN kgm²

& WEIGHT W1 & W2 IN kg

$J_1 = 0.8489$ $W_1 = 62.81$

(I/M + 50 % RUBBER)

$$J_2 = 3.9461 \quad W_2 = 86.46$$

< A/PLATE+D/M+COVER+50% RUBBER >

MAX. BORE = 170 MM

$$\frac{\text{Vibratory Torque}}{\omega} = 3561 \text{ Nm.}$$

$$\underline{\text{Allowable Heat Load}} = 369 \text{ Watts}$$

TORTIONAL STIFFNESS -----

0.25	1 kN	-	0.230	MNm/rad
------	------	---	-------	---------

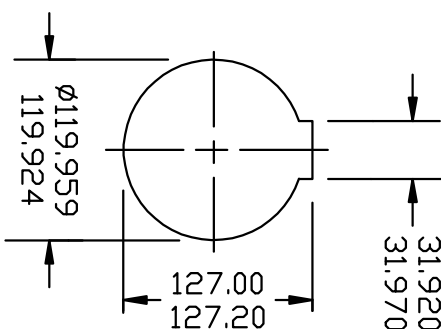
0.50 | kN - 0.460 MNm/rad

@ 0.75 | kN - 0.900 MNm/rad.

@ 1.0 TKN - 1.400 MNm/rad.

* BALANCE TD G6.3 @ 1800 RPM

BORE & KEY-WAY DETAILS



< CUMMINS COUP. ASSY NO. : 3877363/01 >

GEOMETRIC TOLERANCING SYMBOLS, U.S. 200		SURFACE ROUGHNESS VALUES ARE EXPRESSED IN MICRO METERS		MATERIALS SEE BOM		POONA COUPLINGS PVT. LTD	
STRAIGHTNESS		PARALLELISM					
FLATNESS		PERPENDICULARITY					
CIRCULARITY		CIRCULAR RUNOUT					
ROUNDNESS		ANGULAR RUNOUT					
SYMMETRY		POSITION					
CONCENTRICITY		ORIENTATION					
CHIRALITY		UNLESS OTHERWISE SPECIFIED ALL DIMENSIONS EXPRESSED IN MM					
PROFILE OF A LINE		UNLESS OTHERWISE SPECIFIED MACHINE AKM					
PROFILE OF A SURFACE		UNLESS OTHERWISE SPECIFIED MACHINE AKM					
MAX. MAT. CONDITION		DIMENSIONS MAY VARY 0.25 MM					
THIRD ANGLE PROJECTION							
ASSEMBLY							
SIZE/SCALE							
DATE							
APPD							
AKM							
10/12/2013							
SIZE/SCALE							
SIZE/SCALE							
SHEET 1 OF 1							

File No. HEP-TTN0101X(5)/88/2025-HEP-TAM21300 (Computer No. 254806)

Generated from eOffice by Kamal Singh Narvariva, MANAGER(KSN)-MNX35400-HEP, MANAGER, HEP-HEAVY ELECTRICALS PLANT (HEP) on 11/12/2025 02:56 pm

Duly filled Technical Pre-Qualification Requirements to be submitted along with the offer by vendor

For uploading along with the enquiry

Ref No: TME/PQR/TA7003/Coupling/Rev.00

Dated: 15/03/2024

Technical Pre-Qualification Requirements (PQR) for “Coupling”

Vendor should comply with the following clauses in order to qualify for supply of Coupling (duly filled PQR shall be submitted along with the offer by vendor):

Cl. No.	Description	Vendor to comment	
		Complied / Not complied	Supporting relevant document to be submitted along with offer
1	Vendor shall supply Coupling as per drawing no. mentioned in enquiry without any deviation.	Yes/No	Not Required
2	Vendor should be a manufacturer and not a trader.	Manufacturer/ Trader	Not Required
3	Vendor to furnish drawings of the offered coupling along with technical data sheet.	Yes/No	Drawing/data sheet
4	Vendor should have past experience of successfully supplying of tendered item to Indian railway/Traction machine manufacturer in preceding 5-years from enquiry opening date. (Vendor to ensure that documents submitted against b) & c) shall correlate with the submitted P.O. copy).	Yes/No	a. PO copies. b. Drawing of supplied item. c. Supply proof i.e. invoice.
5	For verification of information furnished by vendor, additional documents proofs etc. may be required by BHEL. Vendor to confirm providing the same.	Yes/No	Not Required

Note:

1. Compliance of all the points in above T-PQR is mandatory. In absence of compliance of above, vendor's offer is liable to be rejected.
2. Information / compliance / documents submitted by vendor shall be authentic in all aspects. In case any deviation / false information / forged documents are observed, BHEL is free to initiate appropriate punitive proceeding against the supplier.

Important: This document is to be filled and submitted along with the offer. This document must be signed by authorized representative of the vendor and should contain the name of representative & seal of the company.

Date: **(Sign and Seal of Authorized representative of vendor)**

Page 1 of 1